

# Allermuir

*at home*



**Design Every Day**

# Allermuir

*at home*

## WHAT'S INSIDE...

This collection features our latest and most loved pieces of furniture. From mid-century classics to contemporary sophistication. So whether you are looking for sweeping silhouettes or a design classic, you can rest assured this collection will leave you feeling inspired.

### Allermuir at Home.

We believe that space planning should be the first step when styling any interior.

Our collection suggests products based on purpose, allowing you to effortlessly achieve layouts that suit your lifestyle.

Our home [Quickship program](#) offers a selection of popular products on short lead times. The products offered are versatile for a range of applications. Please refer to the individual product pages to find further [Quickship](#) and specification information.

Furniture that enhances a space.

### DESIGN STATEMENT

Arc	06
Crate	08
Seating	17

Functional designs, crafted for the home.

### ALL DAY, EVERY DAY

Co-Storage	22
Slide	26

Designs that evolve the concept of home working.

### CREATIVE HOME HUB

Seating	31
---------	----

# We call them finishes, but it's where it all begins ...

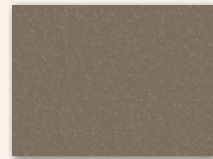
Our Allermuir at Home finishes have been perfectly paired\* by our stylists to bring you a combination of contemporary color palettes that are both modern and timeless.

## TFL FINISHES



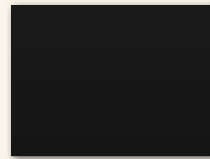
WALNUT

+



SAND

OR

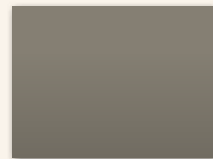


BLACK



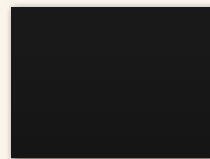
OAK

+



STONE

OR

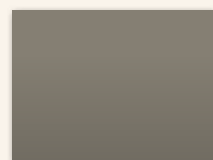


BLACK



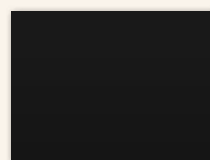
MAPLE

+



STONE

OR



BLACK

## ARC DESK PRIVACY SCREEN FABRICS



SANDS



PEBBLE



INK

**SAMPLE SERVICE FROM ALLERMUIR**  
WE ARE HAPPY TO HELP YOU DECIDE ON YOUR FABRIC AND FINISH CHOICES. WE OFFER A FAST AND EFFICIENT SAMPLING SERVICE.

CONTACT US AT THE FOLLOWING ADDRESS FOR FINISH SAMPLES

[finishes@allermuirathome.com](mailto:finishes@allermuirathome.com)



\*PLEASE SEE INDIVIDUAL PRODUCT PAGES FOR ALL SPECIFIC PRODUCT FINISHES  
[finishes@allermuirathome.com](mailto:finishes@allermuirathome.com)

A concept that combines both mid-century and modern design aesthetics, achieving a contemporary and artistic desk solution for the home. Arc's soft edges and wrapped screen creates an elegant and statement design.



① ARC Desk

② KIN Tub Chair  
Page 19

1 ARC DESK / ARDSG-1306  
Shown with Black legs, Oak work surface, Oak shelf, Black gantry and Sands fabric.

2 KIN CHAIR / AKN-705U3  
Shown in Ash Gray fabric with a Black base

DESIGN STATEMENT

# Arc Desk

DESIGN BY THE ALLERUIR DESIGN TEAM

CUT OUT

Our desks are designed with a scalloped cut-out section to accommodate your cables.



DESK | \$259  
QUICKSHIP READY

Height. 29"  
Width. 51"  
Depth. 24"  
Work Surface. 51" x 24"  
Legs. Steel powder coat with glide  
Top. TFL

Code. ARD1306

Quickship Options  
Top in Walnut or Oak with Black legs

DESK WITH SCREEN + SHELF | \$536  
QUICKSHIP READY

Height. 40"  
Width. 54"  
Depth. 25"  
Work Surface. 51" x 24"  
Work Surface Height. 29"  
Legs. Steel powder coat with glide  
Top + Shelf. TFL  
Privacy Screen. 100% Polyester  
Code. ARDS1306

Quickship Options  
Top in Walnut or Oak with Black legs  
Screen Fabric in Ink



DESK WITH GANTRY, SCREEN + SHELF | \$596

Height. 58"  
Width. 54"  
Depth. 25"  
Work Surface. 51" x 24"  
Work Surface Height. 29"  
Legs. Steel powder coat with glide  
Gantry. Steel powder coat  
Top + Shelf. TFL  
Privacy Screen. 100% Polyester  
Code. ARDSG1306



EXPLORE THE COLORS ON PAGE 04

- Walnut TFL — Black / Sand legs
- Maple TFL — Black / Stone legs
- Oak TFL — Black / Stone legs
- Privacy Screen Fabrics — Sands / Pebble / Ink

Crate Compact is a free-standing desk and shelving unit, a perfect home edition for those looking to incorporate home working into an every day environment.

① CRATE COMPACT Desk

② FAMIGLIA MOBILE Chair  
Page 17

1 CRATE COMPACT / CRTU0905  
Shown in Oak with a Black frame.

2 FAMIGLIA CHAIR / AFA-501  
Shown in Dusk Pink fabric with a Black frame.

8—9 06—09

DESIGN STATEMENT

# Crate Compact

DESIGN BY THE ALLERMUIR DESIGN TEAM



DESK | \$327

Height. 29"  
Width. 36"  
Depth. 20"  
Work Surface. 35" x 20"  
Frame. Steel powder coat  
Top. TFL  
Code. CRT0905

DESK WITH UPSTAND | \$343

QUICKSHIP READY

Height. 36"  
Width. 36"  
Depth. 20"  
Work Surface. 35" x 20"  
Work Surface Height. 29"  
Frame. Steel powder coat  
Top + Upstand. TFL  
Code. CRTU0905

Quickship Options  
Top in Walnut or Oak with Black frame



DESK WITH UPSTAND + SHELVING | \$343

Height. 71"  
Width. 36"  
Depth. 20"  
Work Surface. 35" x 20"  
Work Surface Height. 29"  
Shelf Height. 53"  
Frame. Steel powder coat  
Top, Upstand + Shelf. TFL  
Code. CRTU0905

EXPLORE THE COLORS ON PAGE 04

Walnut TFL — Black / Sand frame  
Maple TFL — Black / Stone frame  
Oak TFL — Black / Stone frame

DESIGN STATEMENT

# Crate Desk

DESIGN BY THE ALLERMUIR DESIGN TEAM

1 CRATE DESK / CRTU1206

Shown in Oak with a Stone frame.

2 CIRCO CHAIR / ACO-505

Shown in Black with Gray mesh and Pebble fabric.

3 CO-PEDESTAL / CO4DP

Shown in Clay and Oak

Crate is a free-standing desk, perfect for making the most of smaller spaces in the home. This minimalistic design uses square tube powder-coated metal and TFL to create a stylish and sleek home office solution.

① CRATE DESK  
Desk

② CIRCO  
Chair  
Page 33

CO-PEDESTAL ③  
Storage  
Page 22



DESK | \$339

QUICKSHIP READY

Height. 29"  
Width. 48"  
Depth. 24"  
Work Surface. 46" x 24"  
Frame. Steel powder coat with adjustable glide  
Top. TFL

Code. CRT1206

Quickship Options

Top in Walnut or Oak with Black frame

DESK WITH UPSTAND | \$356

QUICKSHIP READY

Height. 36"  
Width. 48"  
Depth. 24"

Work Surface. 46" x 24" Work  
Surface Height. 29" Frame. Steel  
powder coat with adjustable glide  
Top + Upstand. TFL

Code. CRTU1206

Quickship Options

Top in Walnut or Oak with Black frame



FLUID DESIGN

Customize our creations to suit your space, with multiple door and drawer options available — the choice is yours!

EXPLORE THE COLORS ON PAGE 04

Walnut TFL — Black / Sand frame

Maple TFL — Black / Stone frame

Oak TFL — Black / Stone frame

Crate is a free-standing desk with an integrated storage unit. A minimal and contemporary home office solution that can be easily applied within a variety of spaces and with two storage designs available you can select a style to suit your setting.



① CRATE DESK WITH OPEN STORAGE Desk

1 CRATE DESK / CRTUSS1206  
Shown in Oak with a Stone frame.

DESIGN STATEMENT

# Crate Desk

DESIGN BY THE ALLERMUIR DESIGN TEAM



DESK WITH OPEN STORAGE | \$727  
QUICKSHIP READY

Height. 36"  
Width. 48"  
Depth. 24"  
Work Surface. 46" x 24"  
Work Surface Height. 29"  
Drawer Width. 16"  
Frame. Steel powder coat with adjustable glide  
Top, Upstand + Storage. TFL  
Code. CRTUSS1206

Quickship Options  
Top in Walnut or Oak with Black frame

DESK WITH DRAWER + DOOR STORAGE | \$808

Height. 36"  
Width. 48"  
Depth. 24"  
Work Surface. 46" x 24"  
Work Surface Height. 29"  
Drawer Width. 16"  
Frame. Steel powder coat with adjustable glide  
Top + Upstand. TFL  
Code. CRTUDS1206



MAKE IT YOURS

Customize your desk to suit the way you work, with multiple finish and storage options — we'll let you decide!



EXPLORE THE COLORS ON PAGE 04

- Walnut TFL — Black / Sand frame
- Maple TFL — Black / Stone frame
- Oak TFL — Black / Stone frame

Crate Tall Storage is a free-standing corner desk with integrated shelving and storage. A contemporary home office design that can be easily applied to a variety of spaces.

① CRATE TALL STORAGE Desk

② KIN Sidechair Page 19

1 CRATE TALL STORAGE / CRTCTDS1206R  
Shown in Walnut with a Sand frame.

2 KIN CHAIR / AKN-505U3  
Shown in Sky Blue fabric with a Haze Blue base.

DESIGN STATEMENT

# Crate Tall Storage

DESIGN BY THE ALLERMUIR DESIGN TEAM



DESK WITH STORAGE — OPEN | \$1271  
QUICKSHIP READY

Height. 70"  
Width. 65"  
Depth. 36"  
Work Surface. 46" x 23"  
Work Surface Height. 29"  
Shelf Height. 53"  
Drawer Width. 16"  
Frame. Steel powder coat with adjustable glide  
Top, Shelves + Storage. TFL

Configurations. Left or right hand versions available, left hand shown

Left Handed Code. CRTCTSS1206L  
Right Handed Code. CRTCTSS1206R

Quickship Options  
Top in Walnut or Oak with Black frame

IT'S ALL IN HAND

Remember we supply these desks left or right handed —just let us know!

DESK WITH STORAGE — ONE DRAWER / ONE DOOR | \$1353

Height. 70"  
Width. 65"  
Depth. 36"  
Work Surface. 46" x 23"  
Work Surface Height. 29"  
Shelf Height. 53"  
Drawer Width. 16"  
Frame. Steel powder coat with adjustable glide  
Top, Shelves + Storage. TFL

Configurations. Left or right hand versions available, right hand shown

Left Handed Code. CRTCTDS1206L  
Right Handed Code. CRTCTDS1206R



EXPLORE THE COLORS ON PAGE 04

Walnut TFL — Black / Sand frame  
Maple TFL — Black / Stone frame  
Oak TFL — Black / Stone frame

DESIGN STATEMENT

# Seating Finishes

A COLLECTION FOR THE HOME OFFICE

### FAMIGLIA LEG FINISHES

METAL

WOOD



Black Steel



White Steel



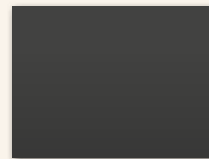
Black Ash



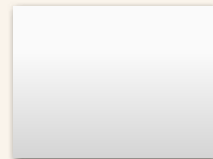
Clear Lacquer Ash

### KIN PLASTICS + BASE COLORS

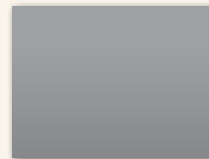
PLEASE NOTE THAT BASE AND SHELL COLORS WILL ALWAYS MATCH



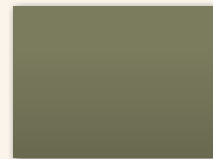
Black



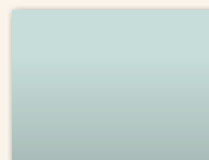
White



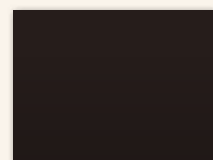
Gray



Pistachio



Haze Blue

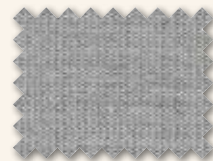


Aubergine

### 97% WOOL FABRICS



Dusk Pink



Ash Gray



Ocean Blue



Charcoal Gray



Sandstone Orange



Plum



Sky Blue



Soft Green

DESIGN STATEMENT

# Famiglia

DESIGN BY PEARSONLLOYD



### FAMIGLIA / MOBILE | \$751

**Leg Color.** Black or White  
**Shell Construction.** Fully upholstered molded foam  
**Frame.** Steel powder coat

Code. AFA-501

### FAMIGLIA / FOUR LEG | \$777

QUICKSHIP READY

**Leg Color.** Black or White  
**Shell Construction.** Fully upholstered molded foam  
**Frame.** Steel powder coat

Code. AFA-502

Quickship Options  
Base in Black, upholstered in Ash grey or Charcoal Grey



### FAMIGLIA / WOOD | \$866

**Leg Color.** Clear Lacquer or Stained Black  
**Shell Construction.** Fully upholstered molded foam  
**Leg Connector.** Aluminum powder coat  
**Legs.** Solid Ash

Code. AFA-503



DESIGN STATEMENT

# Kin

DESIGN BY PEARSONLLOYD



**KIN / SIDECHAIR | \$351**  
QUICKSHIP READY

**Movement.** Height adjustment  
**Shell.** Plastic  
**Base.** Cast Aluminum powder coat

**Code.** AKN-505

**Quickship Options**  
Shell and base in Black, White or Gray

**KIN / TUB | \$377**  
**Movement.** Height adjustment  
**Shell.** Plastic  
**Base.** Cast Aluminum powder coat  
**Code.** AKN-705



**KIN / ARMCHAIR | \$364**  
QUICKSHIP READY

**Movement.** Height adjustment  
**Shell.** Plastic  
**Base.** Cast Aluminum powder coat

**Code.** AKN-605

**Quickship Options**  
Shell and base in Black, White or Gray

EXPLORE THE COLORS ON PAGE 16  
Plastic + Base finishes — Black / White / Gray / Pistachio / Aubergine / Haze Blue

DESIGN STATEMENT

# Kin

DESIGN BY PEARSONLLOYD



**KIN / SIDECHAIR | \$647**  
**Movement.** Height adjustment  
**Shell.** Fully upholstered  
**Base.** Cast Aluminum powder coat  
**Code.** AKN-505U3

**KIN / TUB | \$542**  
**Movement.** Height adjustment  
**Shell.** Fully upholstered  
**Base.** Cast Aluminum powder coat  
**Code.** AKN-705U3



EXPLORE THE COLORS ON PAGE 16  
Base finishes — Black / White / Gray / Pistachio / Aubergine / Haze Blue

ALL DAY, EVERY DAY

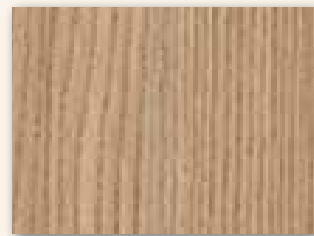
# Storage Finishes

A COLLECTION FOR THE HOME OFFICE

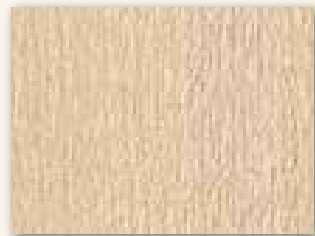
## TFL FINISHES



WALNUT



OAK

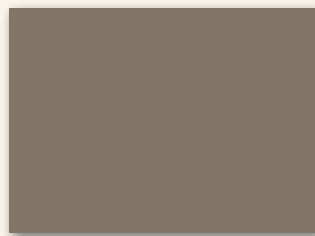


MAPLE

## TFL CONTRAST FINISHES



OAK



CLAY

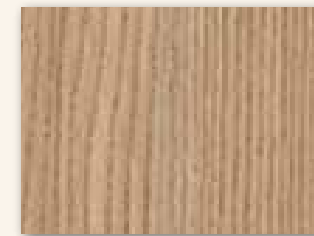
ALL DAY, EVERY DAY

# Slide Desk Finishes

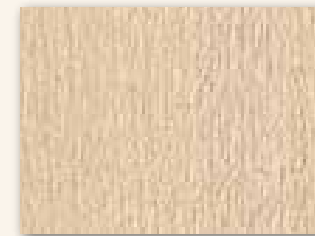
## TFL FINISHES



WALNUT

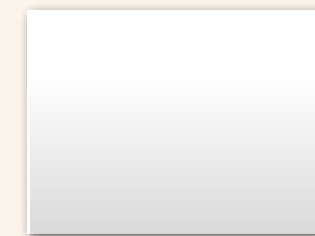


OAK

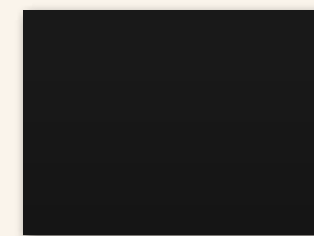


MAPLE

## STEEL POWDER COAT FINISHES



WHITE



BLACK

Our Co-Pedestal range sits seamlessly with many of our home desk designs.

This collection of mobile units with concealed casters offers both open and closed storage options.

① Co-PEDESTAL Storage



1 Co-PEDESTAL  
Shown in Clay and Oak.

ALL DAY EVRY DAY

# Co-Pedestal

DESIGN BY THE ALLERMUIR DESIGN TEAM



**DRAWER AND STORE | \$172**  
QUICKSHIP READY

**Height.** 25"  
**Width.** 13"  
**Depth.** 18"  
**Construction.** TFL with concealed casters

**Code.** CODP

[Quickship Options](#)

Carcass in Walnut, Oak or Clay & Oak

**DRAWER AND DOOR | \$212**  
QUICKSHIP READY

**Height.** 25"  
**Width.** 13"  
**Depth.** 18"  
**Construction.** TFL with concealed casters

**Code.** CODDRP

[Quickship Options](#)

Carcass in Walnut, Oak or Clay & Oak



**4 DRAWER | \$314**  
QUICKSHIP READY

**Height.** 25"  
**Width.** 13"  
**Depth.** 18"  
**Construction.** TFL with concealed casters

**Code.** CO4DP

[Quickship Options](#)

Carcass in Walnut, Oak or Clay & Oak



EXPLORE THE COLORS ON PAGE 20—21

TFL finishes — Maple / Oak / Walnut

TFL contrast finishes — Clay / Oak

ALLERUIR AT HOME



1 Co-SIDEBOARD DOUBLE DOOR  
Storage

A sleek and modern design with contrasting steel accent legs. This contemporary storage solution was designed to bring organization and order to creative home workspaces.

1 Co-SIDEBOARD / CO2DRS  
Shown in Clay and Oak  
with a Black frame.

24—25

ALL DAY EVRY DAY

# Co-Sideboard

DESIGN BY THE ALLERUIR DESIGN TEAM



**DRAWER AND DOOR | \$588**  
QUICKSHIP READY

**Height.** 29"  
**Width.** 32"  
**Depth.** 20"  
**Construction.** TFL  
**Frame.** Steel powder coat  
**Code.** CODR4DS

**Quickship Options**  
Carcass in Walnut, Oak or Clay & Oak  
with Black legs



**DOUBLE DOOR | \$376**  
QUICKSHIP READY

**Height.** 29"  
**Width.** 32"  
**Depth.** 20"  
**Construction.** TFL  
**Frame.** Steel powder coat  
**Code.** CO2DRS

**Quickship Options**  
Carcass in Walnut, Oak or Clay & Oak  
with Black legs

EXPLORE THE COLORS ON PAGE 20—21

TFL finishes — Maple / Oak / Walnut

TFL contrast finishes — Clay / Oak

Leg finishes — Black

Slide incorporates a simple yet practical height adjustable workstation that offers a solution to today's home office requirements. Allowing the user options to vary posture and stand while working.

- 1 SLIDE DESK / SDE5430  
Shown in Oak with a White frame.
- 2 OUSBY CHAIR / AOY-505HA  
Shown in Light Gray with Snow mesh and Pebble fabric.
- 3 Co-PEDESTAL / CODDRP  
Shown in Clay and Oak.
- 4 LYFT STOOL / ALT-501  
Shown in Light Gray.



① SLIDE DESK  
Desk  
Page 28

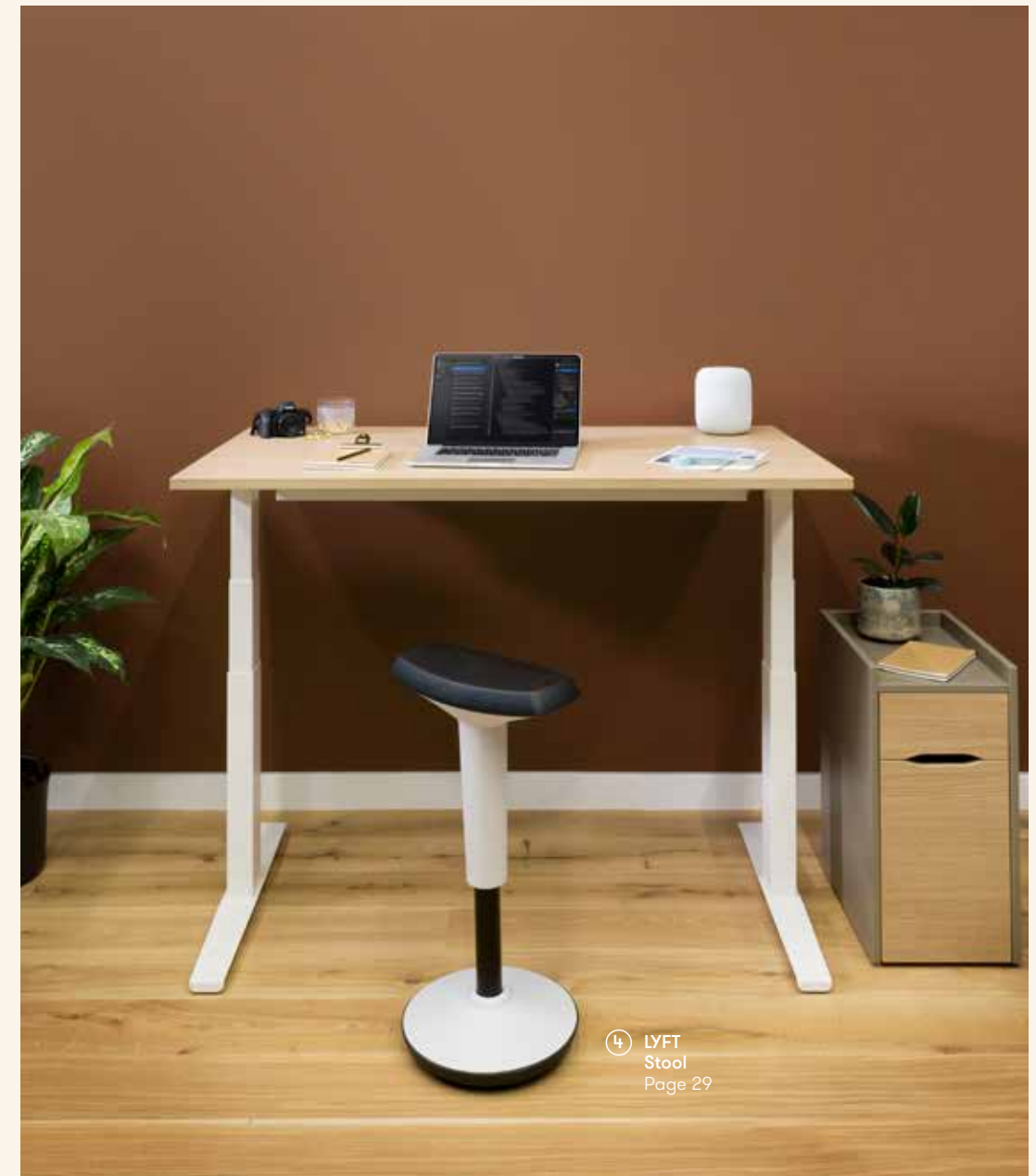
② OUSBY  
Chair  
Page 31

Co-PEDESTAL ③  
Storage  
Page 22

ALL DAY, EVERY DAY

# Slide Desk

DESIGN BY THE ALLERMUIR DESIGN TEAM



④ LYFT  
Stool  
Page 29

EXPLORE THE COLORS ON PAGE 20—21

White Frame — Walnut / Oak / Maple TFL

Black Frame — Walnut / Oak / Maple TFL

ALL DAY, EVERY DAY

# Slide Desk

DESIGN BY THE ALLERMUIR DESIGN TEAM



## ELECTRIC HEIGHT ADJUSTABLE DESK

**Height.** 22.5" - 48.5"  
**Frame.** Steel powder coat with adjustable glide  
**Work Surface.** TFL  
**QUICKSHIP READY Work Surface.** 48" x 30" | \$727  
**Code.** SDE4830

**Quickship Options**  
Top in Walnut or Oak with Black legs

**Work Surface.** 54" x 30" | \$733  
**Code.** SDE5430

**Work Surface.** 60" x 30" | \$739  
**Code.** SDE6030



## FLUID DESIGN.

Height adjustable desks make individual requirements possible, allowing the option to vary posture and stand while working.

EXPLORE THE COLORS ON PAGE 20—21

TFL finishes — Maple / Oak / Walnut  
Steel powder coat finishes — Black / White

ALL DAY, EVERY DAY

# Accessories

A COLLECTION FOR THE HOME OFFICE



## LYFT STOOL | \$234 QUICKSHIP READY

**Style.** Height adjustable stool  
**Frame.** Plastic  
**Seat.** PU pad

**Code.** ALT-501

### Plastic Colors

● Black ● Gray ● Light Gray



## ROAM STOOL | \$222

**Style.** Mobile stool  
**Frame.** Steel powder coat  
**Seat.** 100% Polyester fabric

**Code.** ARM-501

### Frame Colors

● Black ● White

EXPLORE THE COLORS ON PAGE 30  
Room Stool Fabric finishes — Slate / Blush / Pebble / Ink

CREATIVE HOME HUB

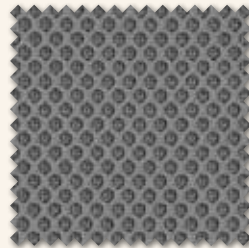
# Seating Mesh

A COLLECTION FOR THE HOME OFFICE

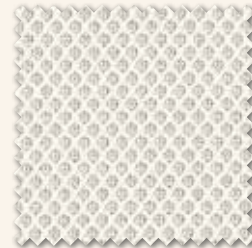
## MESH COLORS



Black



Gray



Snow

CREATIVE HOME HUB

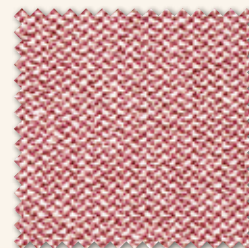
# Seating Fabrics

A COLLECTION FOR THE HOME OFFICE

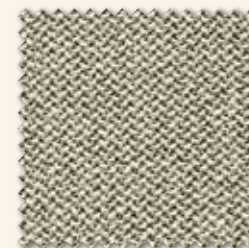
## 100% POLYESTER FABRICS



Slate



Blush



Pebble



Ink

THE SAMPLE SERVICE FROM ALLERMUIR  
finishes@allermuirathome.com

CREATIVE HOME HUB

# Ousby

A COLLECTION FOR THE HOME OFFICE

## ALL COMFORT

The supporting mesh back of Ousby cradles you in all the right places, helped along by the adjustable lumbar support...



### OUSBY | \$434

**Movement.** Adjustable tilt mechanism with height adjustment

**Back.** Mesh with lumbar adjustment

**Seat.** Seat slide adjustment

**Code.** AOY-505

#### Plastic Color



### OUSBY + ARMS | \$496 QUICKSHIP READY

**Movement.** Adjustable tilt mechanism with height adjustment

**Back.** Mesh with lumbar adjustment

**Arms.** Height + width adjustable

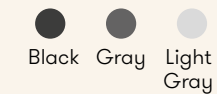
**Seat.** Seat slide adjustment

**Code.** AOY-505HA

#### Quickship Options

Components/Base in Black  
Seat upholstered in Ink, Slate, Pebble or Blush with mesh in Black

#### Plastic Color



THE SAMPLE SERVICE FROM ALLERMUIR  
finishes@allermuirathome.com

CREATIVE HOME HUB

# Freeflex

A COLLECTION FOR THE HOME OFFICE



## FREEFLEX | \$467

**Movement.** Automatic tilt tension mechanism with height adjustment  
**Back.** Fabric with internal flexible membrane + height adjustment  
**Seat.** Seat slide adjustment

Code. AFX-505

### Component Color



Gray

### Back Color



Black



Light Gray

## FREEFLEX + ARMS | \$530

QUICKSHIP READY

**Movement.** Automatic tilt tension mechanism with height adjustment  
**Back.** Fabric with internal flexible membrane + height adjustment  
**Arms.** Height + width adjustable  
**Seat.** Seat slide adjustment

Code. AFX-505HA

### Quickship Options

Components/Base in Grey with Back/Arms in Black  
Seat andback upholstered in Ink, Slate, Pebble or Blush

### Component Color



Gray

### Back + Arms Color



Black



Light Gray



EXPLORE THE COLORS ON PAGE 30

CREATIVE HOME HUB

# Circo

A COLLECTION FOR THE HOME OFFICE



## CIRCO | \$536

QUICKSHIP READY

**Movement.** Tilt + height adjustment  
**Back.** Mesh  
**Seat.** 100% Polyester fabric

Code. ACO-505

### Quickship Options

Components/Base in Black  
Seat upholstered in Ink, Slate, Pebble or Blush with mesh in Black

### Plastic Colors



Black



Gray



Light Gray



EXPLORE THE COLORS ON PAGE 30

**Allermuir**  
*at home*